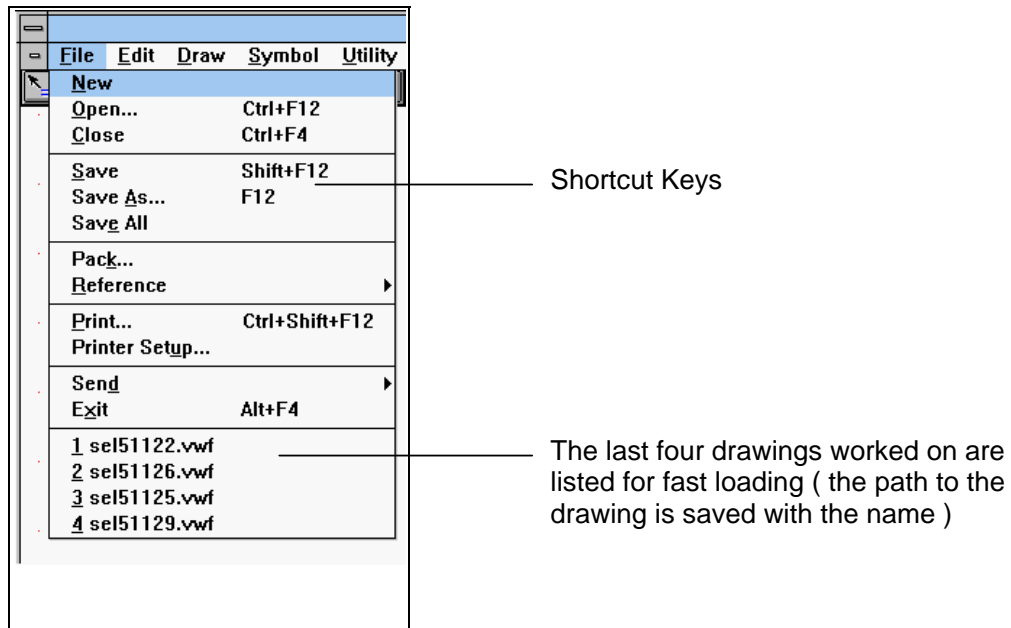


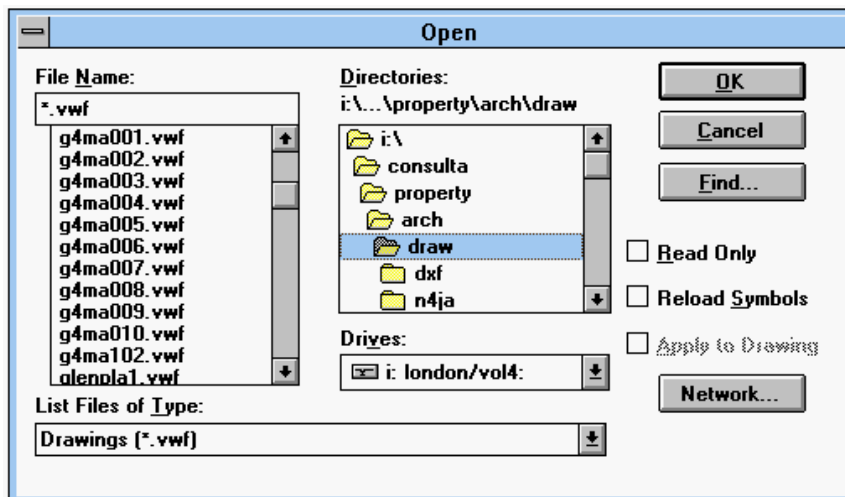
## Starting a New Drawing

1. To Start a new drawing select *File / New*  
A new drawing window appears.  
New drawings are named "*Untitled*" followed by a number that increments each time you start a new drawing during a session.  
To name a new drawing file use *File / Save* or *File / Save As*

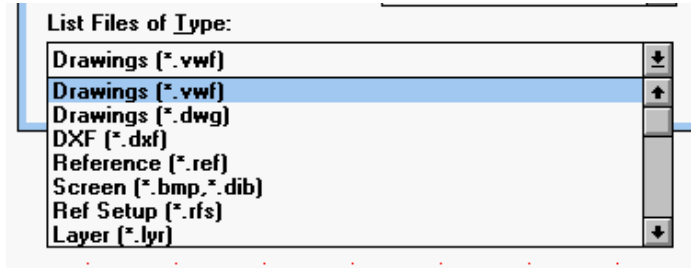


## Accessing an Existing Drawing

1. Select *File / Open*. The File Open Dialogue Box appears



2. Select the desired File type



For a full description of all file types see the Cadvance manual Volume 1 Page 4-40 to 4.42

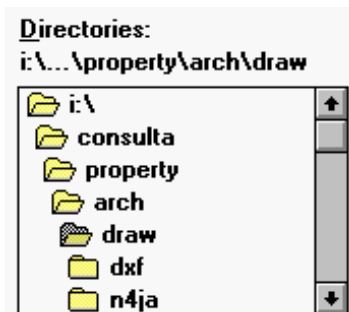
### Drawing File formats

- \*.VWF Cadvance drawing file format ( drawings created in CADVANCE)
- \*.DWG AutoCad (or Autocad Compatible !) use with care.
- \*.DXF **Data eXchange Format** (A **non standard** standard file format set by Autodesk )

3. Select the drive that contains the file.



4. Select the directory that contains the file.



5. Select the desired file.

If you are opening a file that contains symbols, to reload symbols from the external symbol files check the *Reload Symbols* option. Reloading symbols takes time. You should only do it if the symbols have changed and you want to incorporate the changes. Note that CADVANCE looks for symbols in the directories specified with *Options / Path*. (more on Options and Symbols later )

6. Choose OK.

**Tip** *There is no auto-save option within CADVANCE Version 6. When drawing save your work every 15 - 20 minutes, It's easier to redraw 20minutes work, than it is an hours or more.*